

FEADSHIP
ROYAL DUTCH SHIPYARDS



ASTON MARTIN



BIOGRAPHIES

FEADSHIP

Feadship has its roots in collaboration and innovation. Founded in 1949, Feadship brings together generations of craftsmen and boat builders from the De Vries and Van Lent families with roots that can be traced back to the mid-19th century. Today, Feadship is at the vanguard of a global industry, having pioneered international sales, starting with America in 1949, followed by the Middle East and the Far East in the decades that followed. Commissioned by accomplished international figures from politics, industry and technology, Feadship blends innovation, craftsmanship and prestige.

In the modern era, the core values of these royal Dutch shipyards have become increasingly important as the scale, opulence and visual drama of superyachts has intensified. In addition to their own team of talented naval architects and designers, Feadship pioneered creative collaborations with interior designers, artists and architects, overseeing some of the most striking designs ever to take to the seas. The new century has seen Feadship explore the limits of superyacht design with the Feadship Future Concept portfolio.

ASTON MARTIN DESIGN

Design plays a central role in Aston Martin's modern era. Following the creation of a dedicated Design Studio at the company's headquarters in Gaydon, Warwickshire, Aston Martin's talented team of interior and exterior designers work closely alongside Aston Martin's engineering and manufacturing divisions, exploring at first-hand how forms, materials and processes can be brought to life. Aston Martin Design believes in translating the company's core principles of beauty and proportion into non-automotive sectors. Under Executive Vice President and Chief Creative Officer Marek Reichman, Aston Martin Design has discovered new frontiers of creativity. In addition to Aston Martin's acclaimed portfolio of luxury high performance cars, Aston Martin Design now encompasses transportation design, product design, and architectural interiors. This collaboration with Feadship epitomises the spirit of pioneering design that has driven the brand since the beginning of its 107-year history.



ASTON MARTIN



THREE YACHTS, TWO
ICONIC BRANDS, ONE
SHARED ETHOS



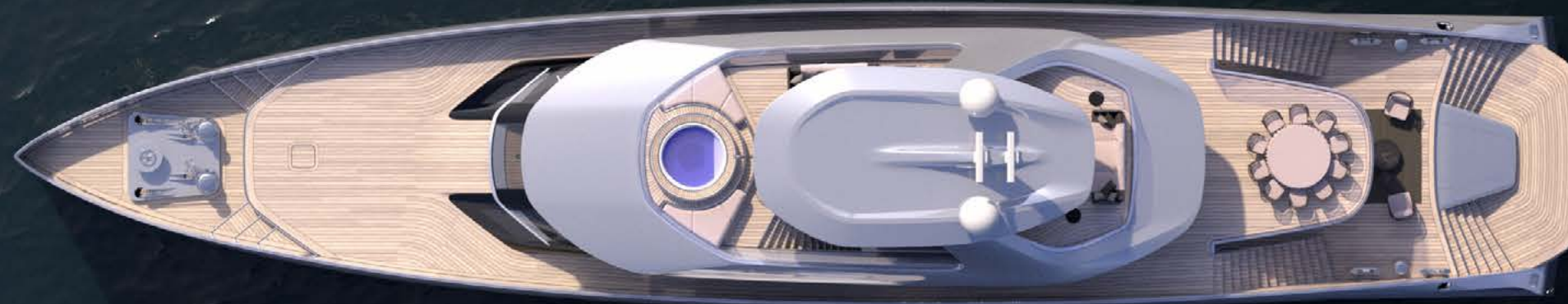
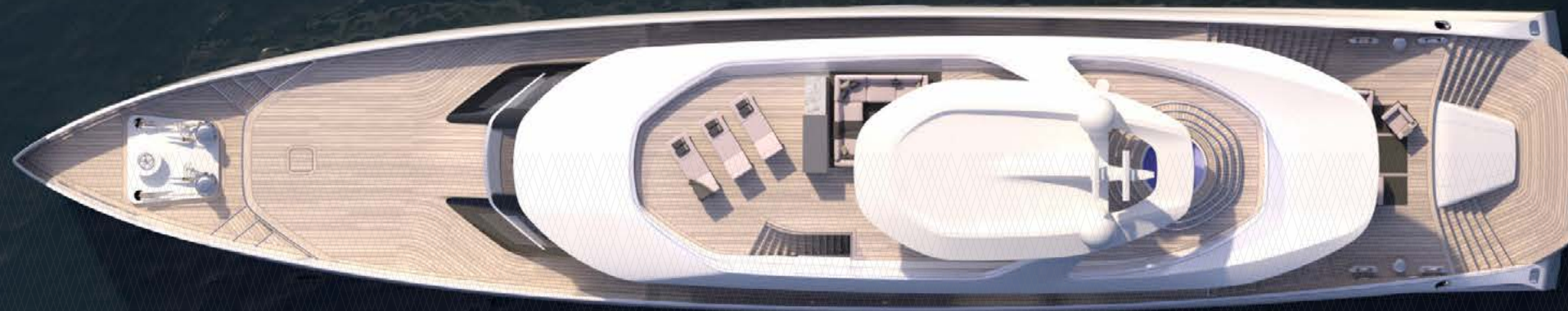
THE THREE VARIANTS



THE THREE VARIANTS

The Feadship x Aston Martin Collection consists of three distinct yachts, with a shared ethos of beauty, craft and elegance. The Family, Grand Tourer and Sport variants illustrate both companies' skills at bespoke design, craftsmanship and new materials. The result is a bold design with a shared visual signature in the form of a flowing shoulder that sweeps back from the upright bow to the stern and swim deck.

Each yacht has its own individual and distinctive silhouette, with a curved hull profile that sweeps down to the waterline from the prominent vertical bow. This striking form displays Feadship's acclaimed engineering expertise, honed for minimal drag through the water. These yachts are designed to bring their owners closer to the ocean, with a unique arrangement of interior and external spaces that creates an easy, restful circulation between each deck.



EXTERIOR DESIGN



EXTERIOR DESIGN



Just as a luxury grand tourer conveys its power and prestige through long, low forms with muscular detailing, how a superyacht sits in the water gives an instant indication of the potency within. Each yacht in the Feadship x Aston Martin Collection has an instantly recognisable profile. Two dark bands of glazing define the horizontal focus of the 45m metre yacht. These components are contrasted against the hull, with its long, sculpted flanks and curves that evoke the bodywork of a motorsport legend. Working closely with Feadship's industry-leading naval architects and design team, the boats encapsulate Aston Martin's decades of experience with design, materials, and innovation and Feadship's innovative approach to contemporary yacht technology.

The Feadship x Aston Martin Collection brings new levels of space to naval architecture. The sleek hull contains generous interior accommodation, from the forward-located owners' suite and office, principle dining room and main lounges. The main staircase leads down to four guest staterooms on the lower deck, set towards the aft of the yacht, beneath an expansive rear deck with waterline views.

On the Family and Grand Tourer variant, the Sun Deck provides 360-degree views of the horizon. Both the Bridge Deck and Main Deck have steeply raked glass façades that create a strong visual connection between the interior staterooms and the deck area. This angularity sets the superstructure apart from the curve of the hull, creating a series of layered, interlocking decks.

EXTERIOR DESIGN

Just as an Aston Martin synthesizes eternal beauty, racing heritage and raw desirability into a luxury sporting automobile, Feadship is not simply a yacht builder. It is a company that fulfils wants and desires, acknowledging its owners' quirks and eccentricities.

Feadship builds the world's finest superyachts, boats that express high performance and beautiful proportion in equal measure. Both companies are based on the premise that the desire for the individual and the unique are a challenge that must be met. Feadship x Aston Martin delivers these qualities, with the finest design details incorporated into a stunning silhouette. Not only do these three yachts imply power and performance but they also demonstrate a supreme attention to detail. Crafts and skill are essential to both company's DNA; on average a Feadship craftsman has twenty years of experience and has worked on forty yachts, while Aston Martin has always prided itself on the skill and experience of its workforce, with each Aston Martin taking over 200 hours to produce.



EXTERIOR DESIGN



EXTERIOR DESIGN

FLYING BUTTRESS



These bold forms evoke the C-pillars of Aston Martin's elegant front-engined Super GT, the DBS Superleggera, while the shape they frame in the hull is home to the dart-like side strake vent detail that is an essential visual and aerodynamic component of every Aston Martin and one of the central strands of the company's design DNA.

The upwards sweep of the rear buttresses incorporate external staircases, with the pattern of the teak deck swept up to form a balustrade. All external decks are ringed with frameless glass balustrades, providing an uninterrupted view of the ocean, while also preserving the elegant lines of the vessel.

INTERIOR DESIGN

CHANDELIER

An uniquely crafted chandelier serves as one of the defining elements of the Family and GT yachts. This light feature, designed in house by Aston Martin Design, acts as a central core, reaching down from the Sun Deck all the way through the heart of the yacht like a glittering spine.

Passing through portals in the decks, the chandelier is composed of over eight hundred glass cylinders, illuminated with a swathe of internal fibre optic cables. The chandelier draws a dramatic curtain of light around the yacht interior, its sparkling facets bathing every deck in a dazzling array of stars, and forming a dramatic visual signature when the yacht is at anchor.



INTERIOR DESIGN

CHANDELIER

The chandelier is a magnificent sculptural element that defines the yacht's interior spaces, bringing a cascade of light down into the lower decks. The hand-crafted chandelier passes through circular skylights formed in each deck, as well as creating a centrepiece for the circular dining room table in the Family boat and descending through the living room and bar in the GT.



INTERIOR DESIGN

The interior of a custom-built superyacht is about effortless simplicity, condensing and editing the building blocks of life, leisure, work and entertainment into a high-performance space that cannot be compromised. Aston Martin and Feadship share an understanding of what drives the truly discerning, and the interior of every yacht in the series is a curation of the very best in every field, from materials to artworks.

From the use of rich, tactile natural materials such as stone and wood, through to the seamless lines, concealed functionality, and high-end fixtures and fittings used throughout, the Feadship x Aston Martin collaboration draws from an array of warm and welcoming finishes.



INTERIOR DESIGN

Throughout the yachts, flooring and textiles adopt simple patterns and textures, ensuring a warm and tactile welcome underfoot, from herringbone wooden floors to luxurious silver-grey carpets. The finest materials are harmonised in a discretely muted natural palette, including tan leather, grey graphite, Carrera marble and exquisite warm brass.

Furniture is supplied by a number of leading modern manufacturers, including the Italian brand Formitalia, which enjoys a close creative partnership with Aston Martin, Minotti, Roda, and Tribù provide a carefully harmonised collection of additional pieces.



OWNER'S STATE ROOM

A serene space, the Owner's State Room is a full beam cabin, with a private seating area, mirrored by a vanity unit on the other side of the cabin. Opening off this space are an ensuite bathroom and separate dressing room, with an adjoining office serving to create a true private realm.

Flanked by Aston Martin's signature sculpted walnut slats the bed and furniture are from Formitalia's x Aston Martin range, their refined colour scheme mixes soft metallics with natural materials like linen, leather, walnut, and cashmere. Lighting is technical and discrete, with focused reading lights combined with subtle indirect mood lighting.



OWNER'S BATHROOM

An oasis of calm within the refuge of the Owner's Suite, the bathroom is defined by its wide expanses of Grigio Imperiale marble, which serves as a backdrop for the geometric simplicity of the brass taps, basin and shower.

The Salvatori Adda basin sits across from a flowing array of walnut slats that cascades down from the panoramic window to create the Feadship x Aston Martin signature bespoke shower.



OFFICE

Feadship is a pioneer in providing ocean-going spaces where business can co-exist with leisure – the very first Feadship to incorporate a satellite communication system was launched in 1979.

Feadship x Aston Martin incorporates a spacious office area into the Owner's Suite, with a long run of windows providing an epic sweep of the horizon from your desk. The fittings pair design classics like the Eames EA 117 Aluminium Group Chair with pieces from Formitalia's Aston Martin range. Designed by Aston Martin Design the bespoke white Carrera marble shelving and desk are backed by a wall of luxurious undulating wool.



WHEELHOUSE



Feadship believes that owners should have the opportunity to work closely alongside their crew and experience the boat's technology, performance, and agility for themselves. The Feadship x Aston Martin wheelhouse is a marvel of modern marine technology, a glass cockpit that uses five screens to convey the yacht's key systems to the captain.

Two screens can be pivoted towards the couches that flank the bridge, allowing guests to participate in navigation, route planning or systems operations. The captain's chair is minimal but commanding, complete with saddle leather accessories that make the most of this heavy but smooth-grained specialist leather that Aston Martin uses extensively in its contemporary interiors.



FAMILY

THE FAMILY YACHT FEATURES LARGE SUN AND MAIN DECKS. THESE EXTERNAL SPACES ARE PAIRED WITH AN EXPANSIVE FLOATING BRIDGE DECK LOUNGE FEATURING PANORAMIC VIEWS OF THE HORIZON, A LIBRARY CORNER AND DINING AREA FOR TEN.



FAMILY



FAMILY SUN DECK

The Family variant allows for outdoor living from dawn to dusk. With a choice of loungers, occasional chairs and sofas on the Sun Deck, in addition to a Jacuzzi, a bespoke Aston Martin bar finished in warm metal and Carrera marble, this is a true outdoor sitting room with 360 views of the horizon.



FAMILY MAIN DECK

Feadship and Aston Martin crafted the layout of the Family yacht to be an oasis of luxurious calm a step away from the ocean. Situated just above the Swim Deck the expansive Main Deck combines a relaxed informal seating area at the stern of the yacht with an outdoor dining table which seats 10 people under the cool shade of the Family yachts unique floating upper lounge.



FAMILY MAIN DECK BAR

A quiet reflective space, with far reaching ocean views thanks to the angled floor to ceiling glass, the Bar & Lounge also offers up a grand view of the Main Deck. With the doors opened, the bar opens out to service the expansive outdoor living and dining area.

High seating from the Aston Martin x Formitalia range is paired with a bespoke floating bar unit that is suspended from the staircases glass balustrade. The towering chandelier flows through the ceiling, creating a glow that illuminates the bar before pouring down the sweeping staircase into the hallway of the private guest level below.



FAMILY BRIDGE DECK LOUNGE

The bespoke chandelier also forms the centrepiece of the circular ten-person Carrera marble dining table, a bespoke Formitalia product created especially for Feadship x Aston Martin. Aston Martin have also shaped the dynamic walnut screen that defines an intimate reading corner around the library area.

Classic leather-backed Aston Martin dining chairs and a sideboard are paired with De Padova PILOTIS armchairs and footstools in the library. Dark walnut finishes with light gold accents are reflected in the ring of brushed brass that lines the interior of the chandelier insert above the table, intensifying the warm reflections in the space.



FAMILY

BRIDGE DECK LOUNGE

The heart of the Feadship x Aston Martin Family and Grand Tourer yacht is the Bridge Deck Lounge, a luxurious space that extends rearward over the main deck creating a floating oasis with breathtaking vistas.

Using Feadship's long-established expertise with sophisticated naval glazing, the massive windows open up the entire space to the horizon. The refined simplicity of the circular dining table is complemented by the twin loungers that follow the strong curves of the hull. Bespoke pieces created by Aston Martin Design, the loungers are long, low units designed for after-dinner drinks and conversation, enjoying media on the drop-down television or simply watching the waves go by.





GRAN TOURER

THE FEADSHIP X ASTON MARTIN GRAN TOURER
IS THE ALL-ROUNDER OF THE FAMILY, A YACHT
THAT BLENDS PERFORMANCE WITH FUNCTION,
SPEED WITH EFFICIENCY AND SPACE WITH
GRACE AND COMFORT.



GRAN TOURER



GRAN TOURER

OUTDOOR LIVING

The key feature of the Gran Tourer's exterior space is the balcony with circular 10-person dining table and chairs by Tribù. This dramatic dining space opens off the Bridge Deck Lounge, giving guests a unique vantage point up above the water. It's the perfect place for an evening meal with an unsurpassed vista of the yacht's surroundings.

GRAN TOURER

BRIDGE DECK LOUNGE

With full width opening doors, the Bridge Deck lounge offers a seamless connection between indoor lounge and outdoor balcony. This is a place for relaxation, with a library of books on hand, superbly comfortable seating and the ability to detach oneself from the wider world. A relaxing media system is also provided for watching the latest movie as the sun sets outside. The welcoming lounge is bathed in light from the yacht's signature glass chandelier as it flows through the space on its way from the Sun Deck above to the Main Deck Bar below.



GRAN TOURER

MAIN DECK BAR LOUNGE

The full beam Bar and Lounge on the Gran Tourer's Main Deck is a refined and exclusive space with exceptional views of the ocean to either side and instant access to the outdoor Main Deck Lounge to the rear. Intended as a grand indoor dining area with both formal dining and informal bar seating the lounge is centred around the tapering glass chandelier that creates a soft inviting light.



GRAN TOURER

SUN DECK

Perched high above the wheelhouse, the GT's Sun Deck is perfect for a relaxing afternoon the jacuzzi gazing out over the horizon. The space is also designed to take on a distinctly more refined atmosphere once the sun goes down. The custom Aston Martin designed chandelier flows over the deck before plunging down into the heart of the yacht. Enjoy the sunset with friends and a chilled bottle of champagne or a dram of whisky.





SPORT

THE SPORT VARIANT IS SLEEK AND ATHLETIC, CONCEALING FUNCTION WITHIN ELEGANT, SPORTING LINES. EQUALLY AT HOME SERVING AS A SUPPORT VESSEL OR AS A STANDALONE CRUISER, THE SPORT NOT ONLY HAS INTERNAL GARAGE SPACE FOR AT LEAST TWO TENDERS BUT A HUGE AREA OF DECK SPACE ON WHICH ADDITIONAL TENDERS AND TOYS CAN BE STORED TO SUPPORT ANOTHER VESSEL. BELOW DECKS, THERE IS GENEROUS ACCOMMODATION FOR UP TO 10 GUESTS.



SPORT



SPORT

SUPPORT VESSEL

Feadship x Aston Martin's Sport variant can provide a number of roles. Differentiated from the Family and Gran Tourer variant by the lower, sleeker superstructure, the dark colours of the roof transform the proportions of the yacht into a craft with a dynamic and stealthy appearance.

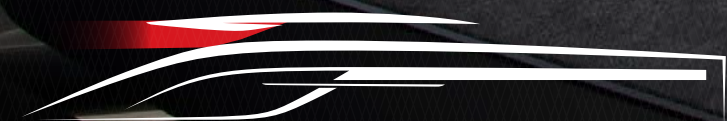
In addition to functioning as a standalone high-performance cruiser, the Sport can also serve as a dedicated Support Vessel. With an expanded rear deck containing an integral tender crane and space for storing a 9m tender, the Sport also has internal space for two tenders and accompanying toys, including jetskis, paddle boards, canoes and Scuba gear. Sport also incorporates generous spaces for additional guests and quarters for specialist crew members, depending on the nature of the voyage. Whether it's long-term exploration, entertaining, sports or pure leisure, the options are all available.



SPORT

BRIDGE DECK LOUNGE

The Sport yacht's superstructure features incredible double height glazing, the Main Deck Lounge is perched high above the Main Deck Bar. The floating upper mezzanine is bathed in natural light making it the perfect place to relax on the soft sofa and read a book. A fireplace at the rear of the lounge provides another focal point as well as a warm glow of heat for the Carrara marble dining table.



SPORT

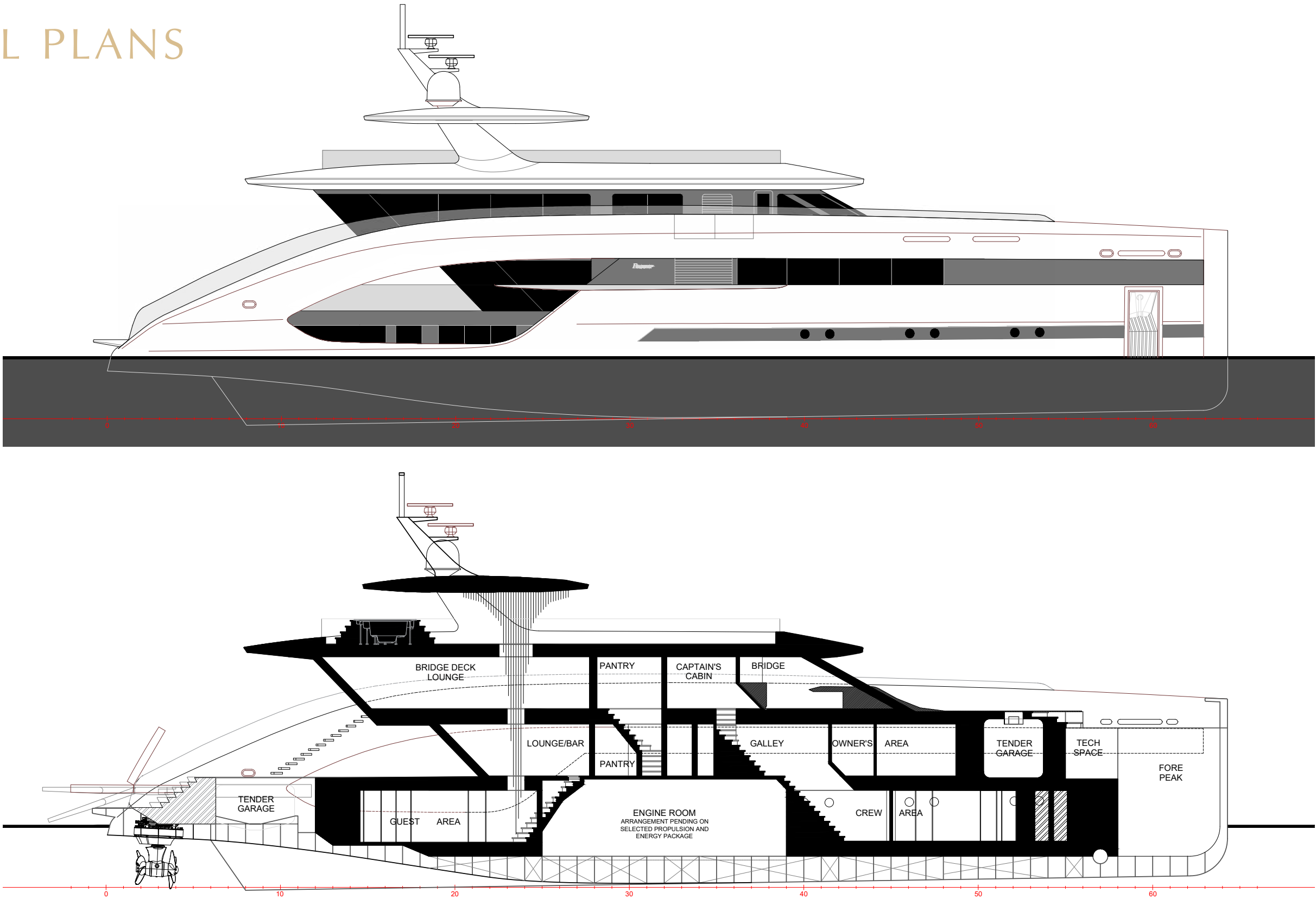
MAIN DECK BAR

A intimate space designed for relaxing with a glass of wine after a long day of exploration. The centrepiece of the Main Deck Bar is the unique wine rack created by Aston Martin Design for the Sport yacht.

A palette of dark woods, black anodised metal and black walnut gives the Bar & Lounge areas of the Sport variant a mature, luxurious atmosphere, with furniture designs that combine custom fittings, bespoke elements and rich materials.



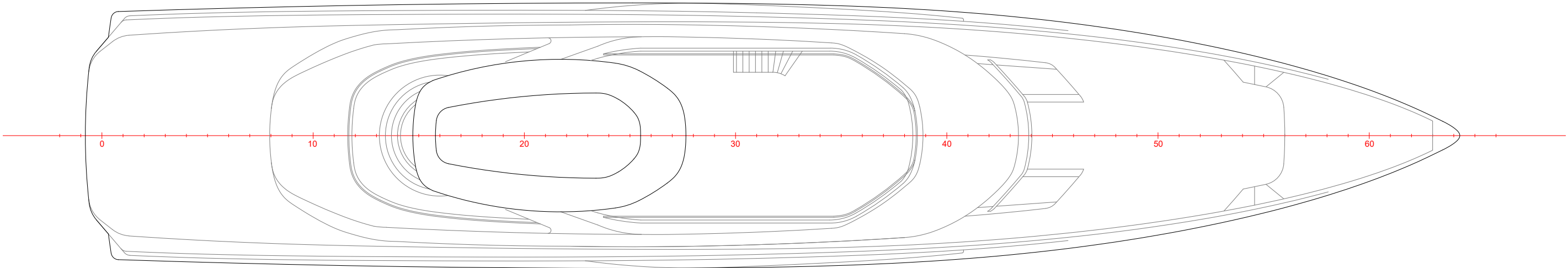
FAMILY
LONGITUDINAL PLANS



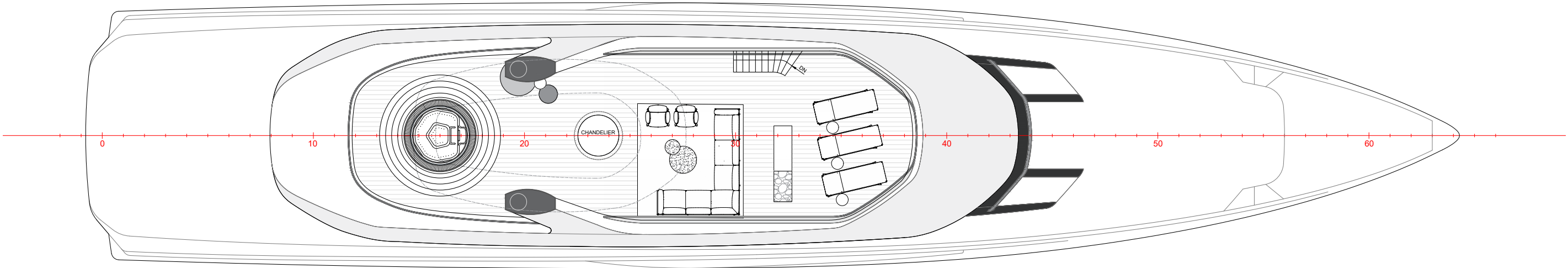
FAMILY

GENERAL ARRANGEMENT PLANS

TOP VIEW



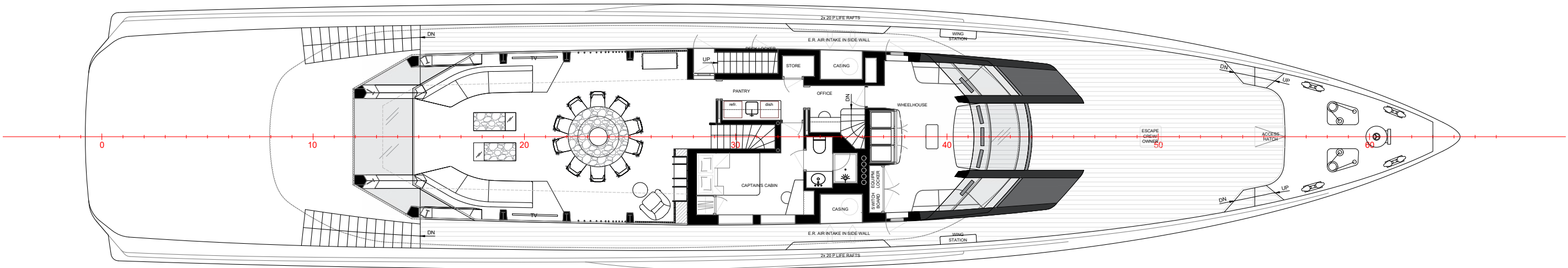
SUN DECK



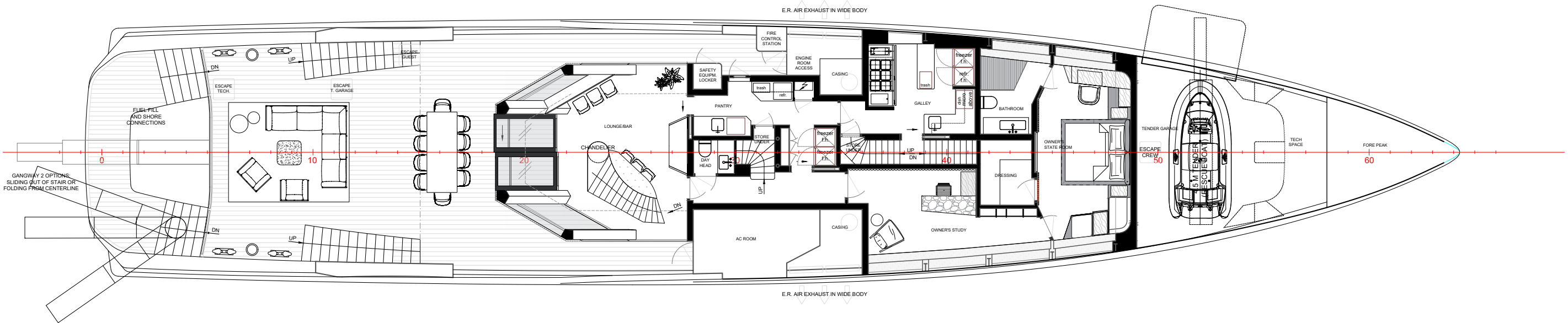
FAMILY

GENERAL ARRANGEMENT PLANS

BRIDGE DECK



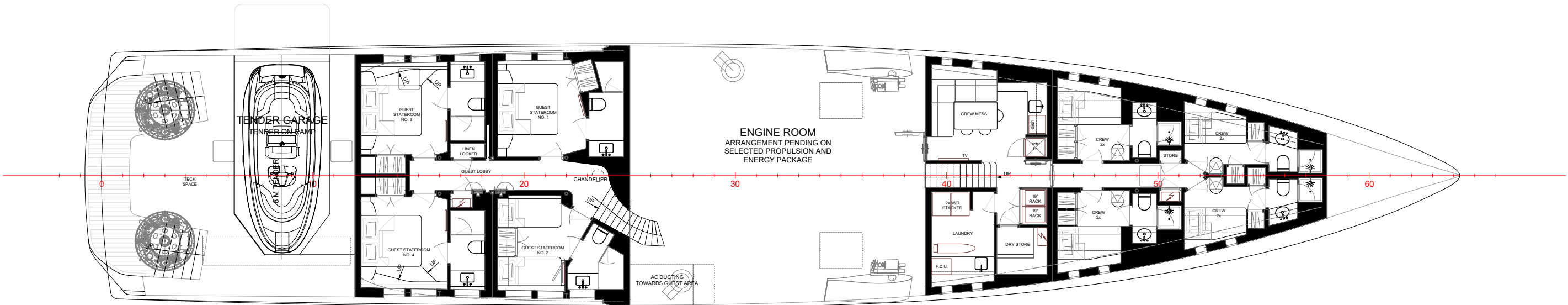
MAIN DECK



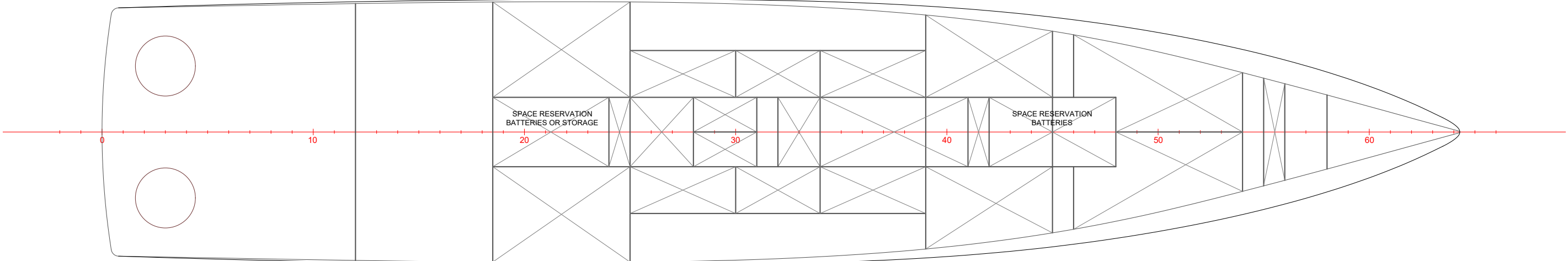
FAMILY

GENERAL ARRANGEMENT PLANS

LOWER DECK

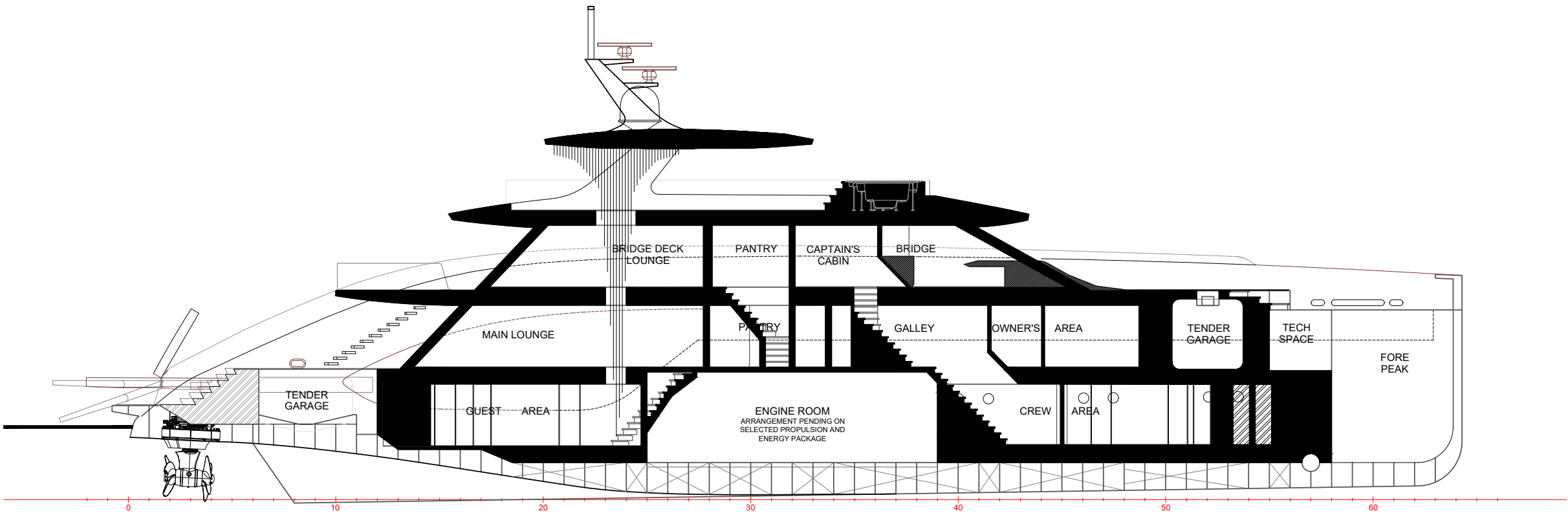
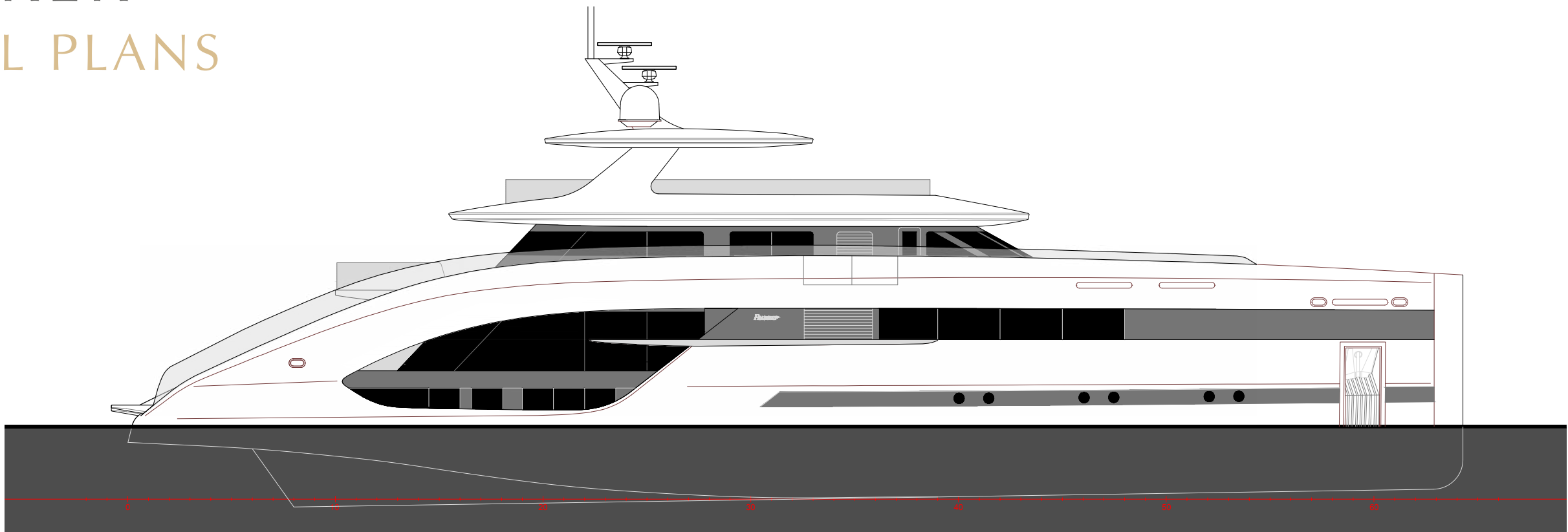


TANK DECK



GRAN TOURER

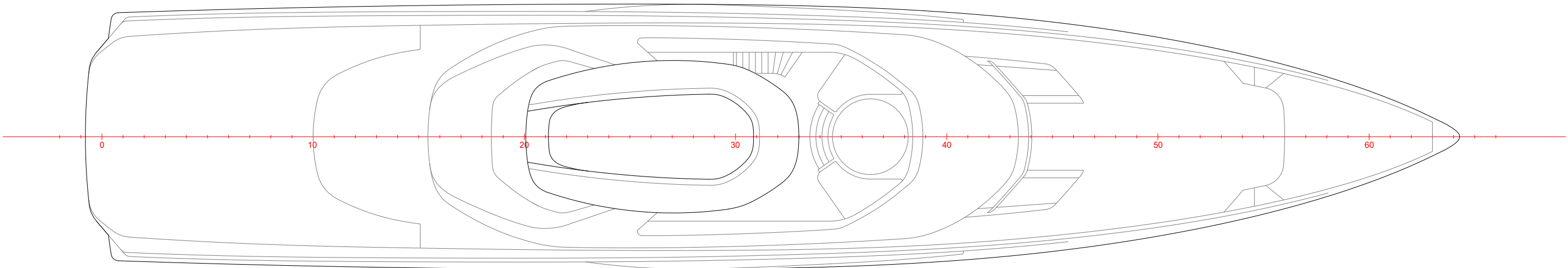
LONGITUDINAL PLANS



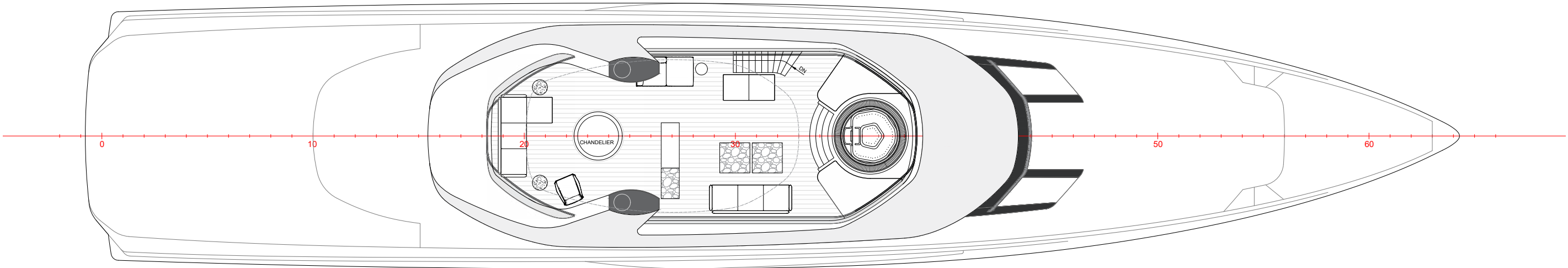
GRAN TOURER

GENERAL ARRANGEMENT PLANS

TOP VIEW



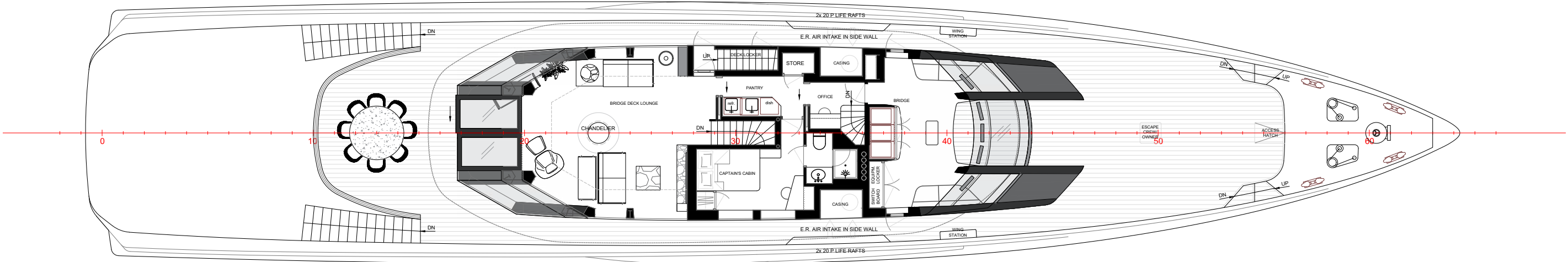
SUN DECK



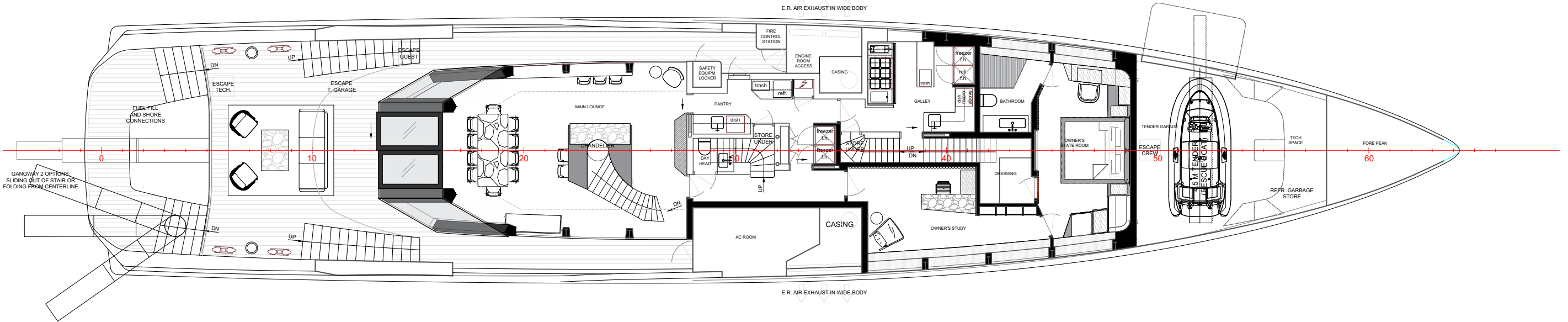
GRAN TOURER

GENERAL ARRANGEMENT PLANS

BRIDGE DECK



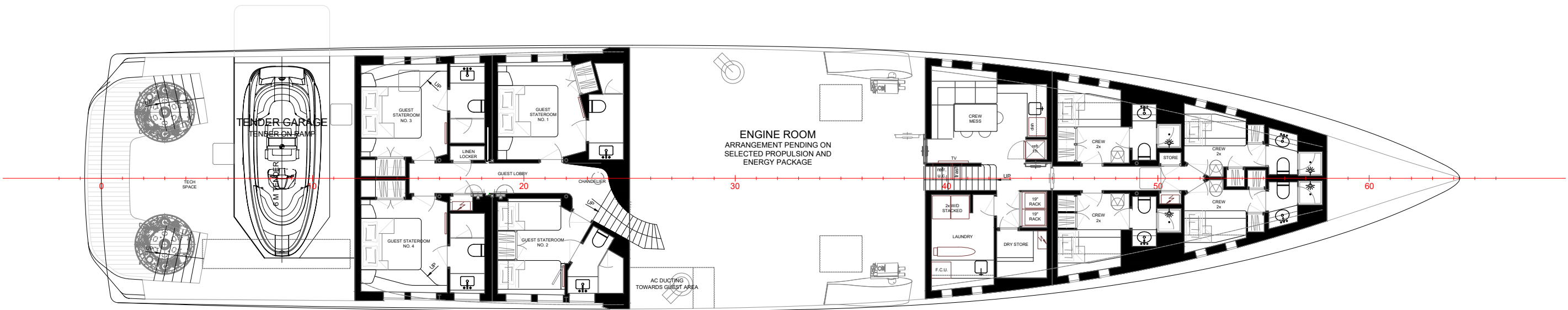
MAIN DECK



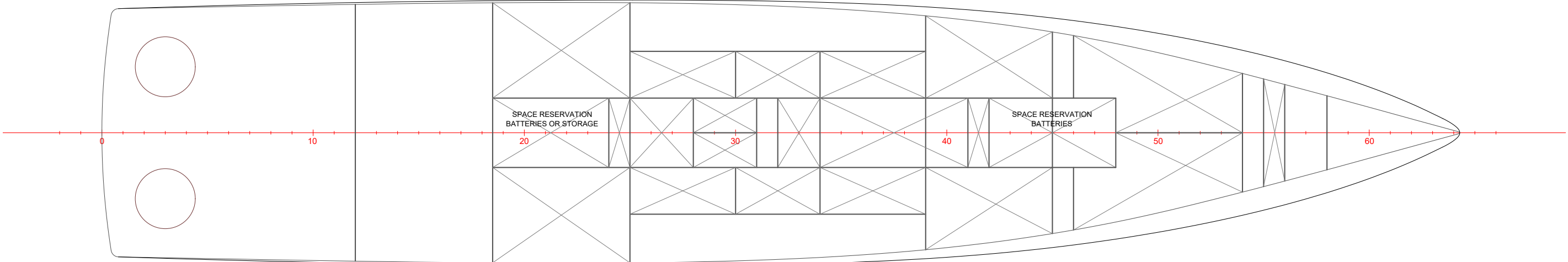
GRAN TOURER

GENERAL ARRANGEMENT PLANS

LOWER DECK

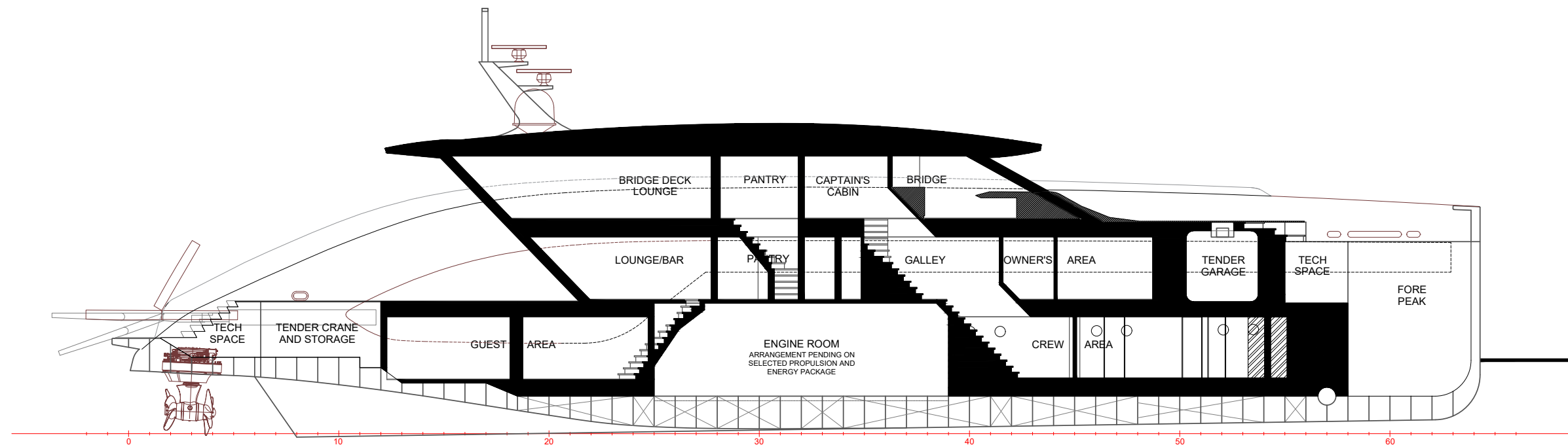
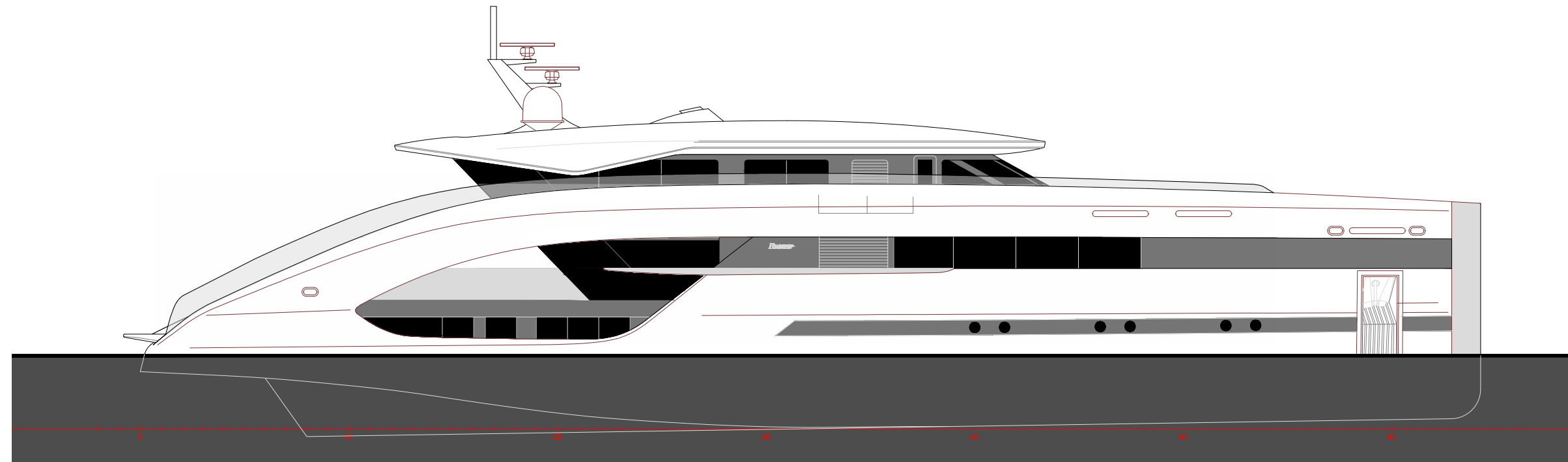


TANK DECK



SPORT

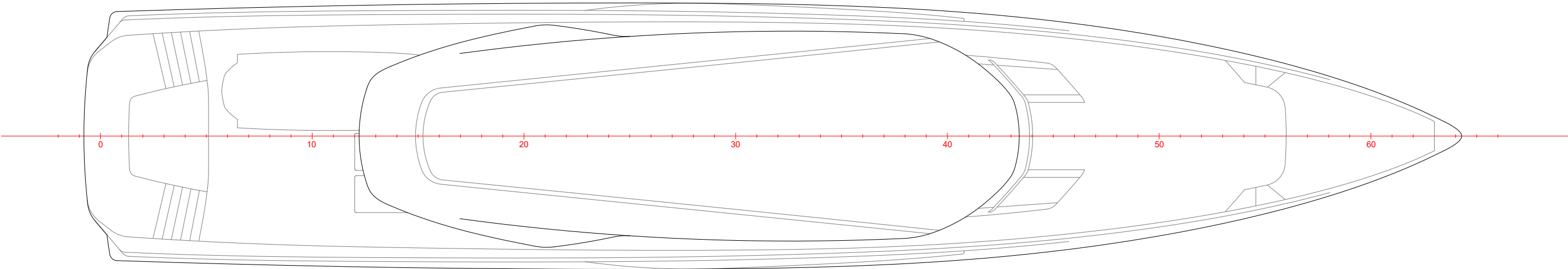
LONGITUDINAL PLANS



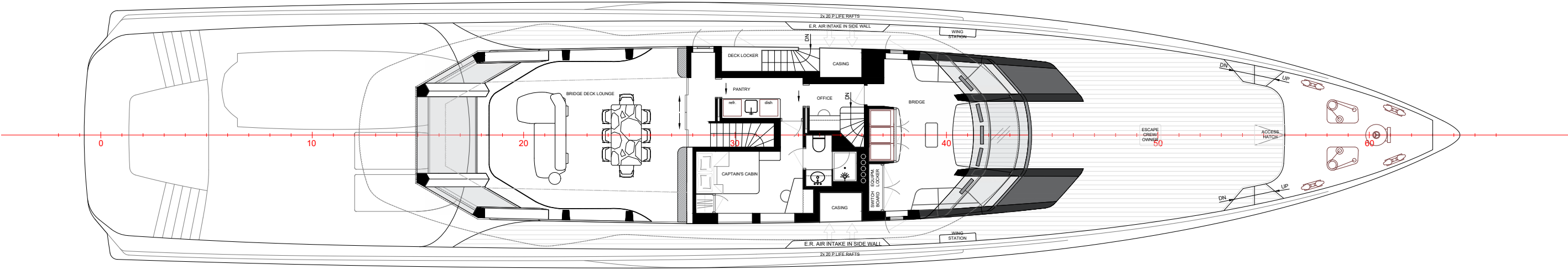
SPORT

GENERAL ARRANGEMENT PLANS

TOP VIEW



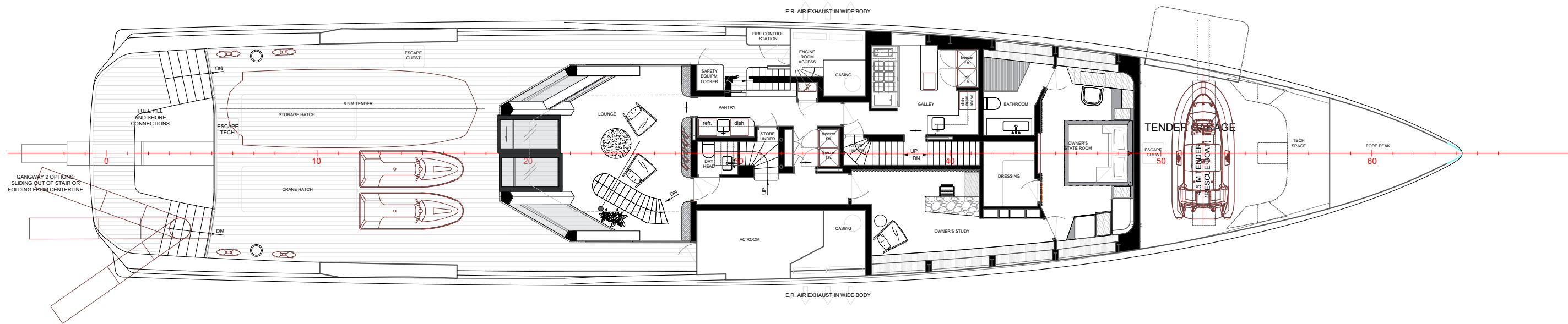
BRIDGE DECK



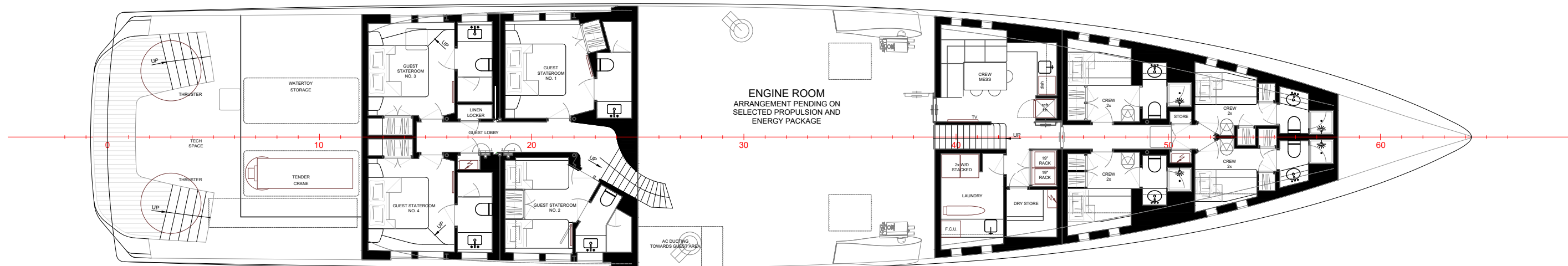
SPORT

GENERAL ARRANGEMENT PLANS

MAIN DECK



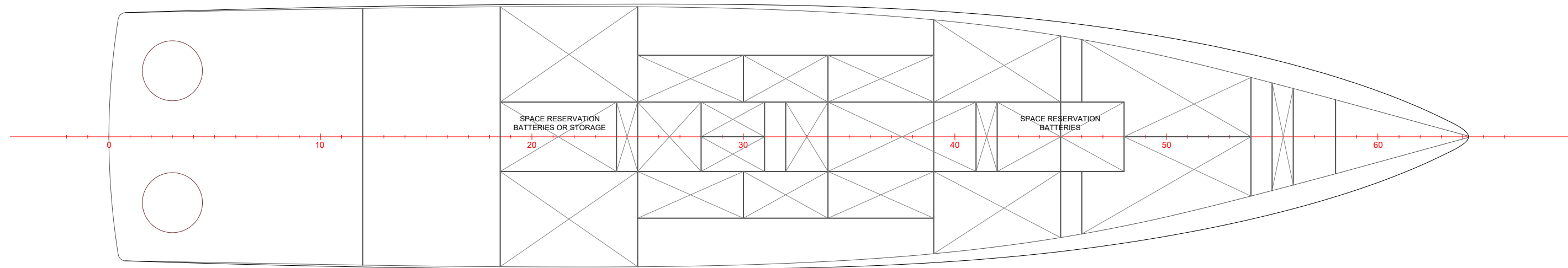
LOWER DECK



SPORT

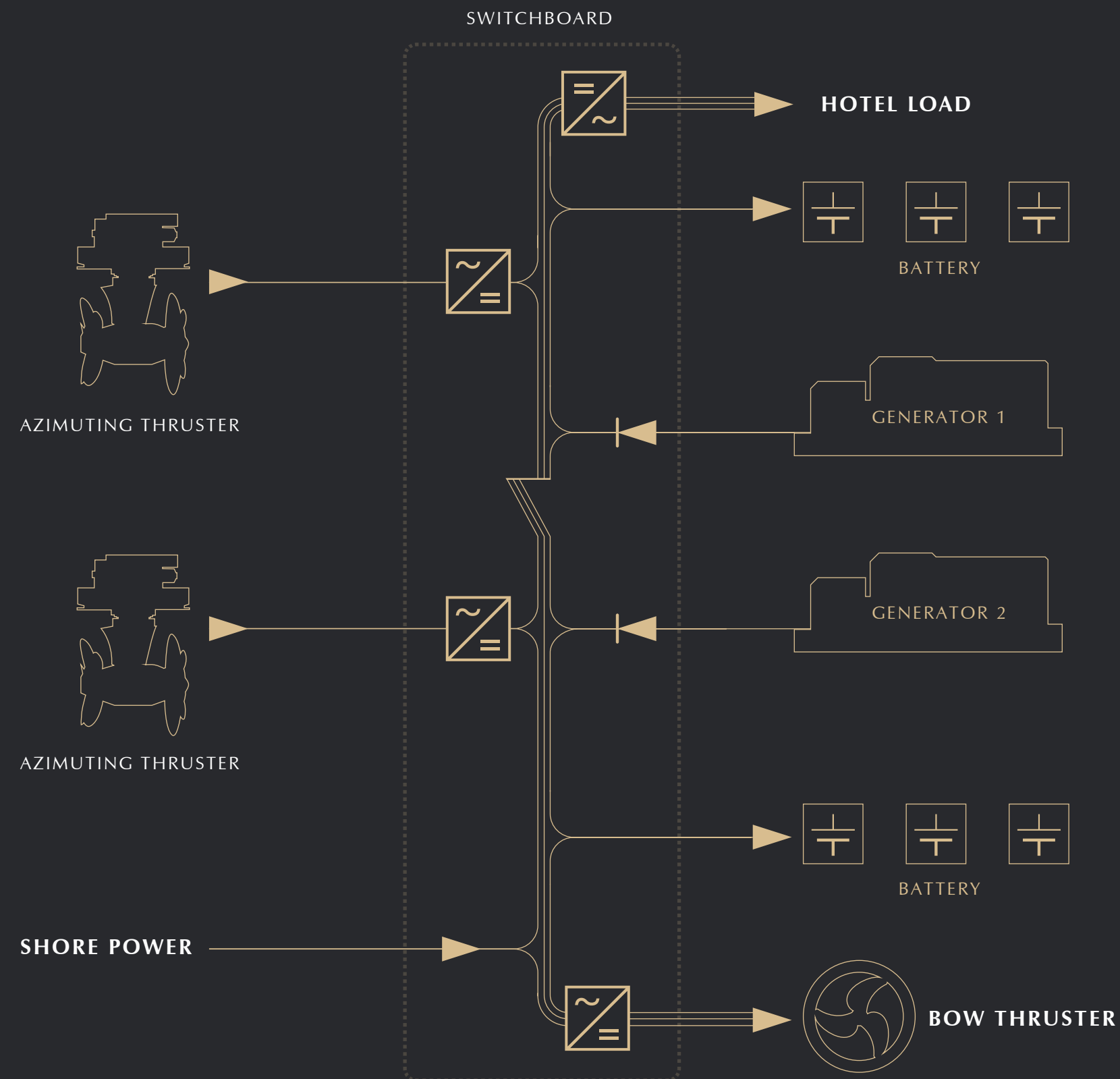
GENERAL ARRANGEMENT PLANS

TANK DECK



HYBRID SYSTEMS

As creators of the world's leading hybrid motor yachts Feadship is constantly innovating, with an environmentally focused approach that stays ahead of the rigorous International Maritime rules that govern superyachts. The Feadship x Aston Martin yachts will build upon this know-how to take these craft to new levels of efficiency and refinement. The two propulsion options are both designed for world-wide cruising with maximum range. The diesel-electric azimuth thruster option is powered by two variable speed diesel generators of around 1200 kW each and a 350 kWh battery pack. This option allows a top speed of 17 knots and a 3500 NM range at 10 knots, as well as quiet and efficient operation with reduced vibrations, fuel consumption and environmental impact, along with excellent manoeuvrability, and less reliance on secondary generators.



Feadship and De Voogt are also developing a special plug in hybrid-version using a large battery bank alongside two generators. Offering the possibility of 100% electric day trips, the smaller generators will still deliver cruise speeds of up to 13 knots, or 17 knots when combined with generator power and an identical range of 3500 NM at 10 knots.

The hybrid yacht also benefits from greater space efficiency, while fast shore charging allows the system to provide the most environmentally friendly option. The Feadship x Aston Martin yachts are fully future proofed. With sophisticated systems that can be upgraded as and when new technologies become available, these superyachts will continue to be defining statements of design, craft and technology

TEAM



At Feadship, heritage, specialist knowledge and exceptional craftsmanship have been honed over decades, effectively defining the modern superyacht industry through a host of innovative designs, high profile launches and pioneering designs. Feadship x Aston Martin builds upon this legacy, bringing performance and design together to create a truly unique range of superyachts.

DE VOOGT

De Voogt Naval Architects has been a core part of Feadship since 1950. One of the pioneers of modern Dutch shipbuilding and engineering, De Voogt's work is integral to every yacht that leaves the Feadship yard. These decades of shared experience include some of the world's best-known superyachts, with innovations in hull shape, materials, efficiency and powerplant amongst others. De Voogt also oversees testing and sea trials, ensuring all aspects of a yacht's design are put through rigorous processes that ensure maximum efficiency and performance. De Voogt Naval Architects was founded in 1913, the same year as Aston Martin, giving it a long heritage of industry firsts.



ASTON MARTIN

Aston Martin Design is an integral part of the company. Working out of the Design Studio at the heart of Aston Martin's Warwickshire headquarters, the consultancy brings the spirit, verve and panache of Aston Martin's acclaimed luxury sports cars into other sectors, from aviation through to architectural interiors. Often working hand in hand with Aston Martin's bespoke division, Q by Aston Martin, the studio's impressive portfolio demonstrate that Aston Martin's design skills can bring pure beauty to every kind of space and object.

Copyright © Feadship & Aston Martin Lagonda Limited 2020

This brochure and all materials and content contained in it are protected by copyright, trade marks and other intellectual property rights owned by Aston Martin and/or Feadship. Such content and materials may not be used or reproduced (in whole or part) for any commercial purpose without the consent of Aston Martin and Feadship.

"All information set out in this brochure is provided in good faith but does not constitute an offer, inducement, representation, warranty or contract. Dimensions, layouts, design features, views, areas, images, photographs, conceptual renders and any artist impressions (as applicable) are for presentation purposes, indicative only and subject to change"

The Feadship x Aston Martin Collection yachts will be built and sold by Feadship.

